



BND 2022

← Paving Our Path →

Process Overview



A blue-tinted photograph of a marching band. In the foreground, a person with long curly hair is seen from the side, wearing a jacket and playing a drum. Behind them, other band members are visible, some wearing masks and hoods, also playing drums. The background is dark, suggesting an outdoor night setting.

Demographic Study

Demographic Study

- Conducted by PASA in **early 2021**
- Presented to MISD Board of Trustees in April 2021
- Provided **enrollment projections** through October 2030
- 3 Growth Scenarios (Low, Moderate, High)
 - Moderate – **9,235 (Oct. 2021)** to 13,420 (Oct. 2030)
- 3 of 6 Elementary schools **over max capacity** by 2025
- LCHS **over max capacity** by 2025 ***

Demographic Study Key Takeaways

- Growth appears to be occurring faster than projected
 - 9,235 (Projected) – 9,359 (Actual as of 10/20/2021)
 - 9,434 as of Friday, Feb. 18, 2022
- Capacity Concerns:
 - Keenan Elementary – 784 (Projected) – 863 (Actual as of 2/18/2022)
 - LCHS – 1,454 (Projected) – 1,607 (Actual as of 2/18/2022)
 - OHJH – 1,096 (Projected) – 1,176 (Actual as of 2/18/2022)

A blue-tinted photograph of a marching band. In the foreground, a person with long curly hair is seen from the side, wearing a light-colored jacket and playing a drum. Behind them, other band members are visible, some wearing masks and hoods, also playing drums. The background is dark, suggesting an outdoor setting at night or in low light. The overall mood is focused and active.

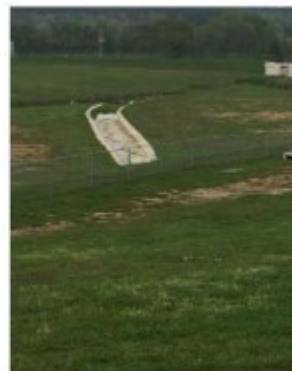
Facility Assessment

Facility Assessment

- The firms assessed the current condition of each building and provided recommendations for improvements.
- The Facility Assessment found nearly \$70 million worth of repairs (in 2021 costs), improvements, and necessary changes for code compliance across the district.



Campus Example: Lake Creek HS

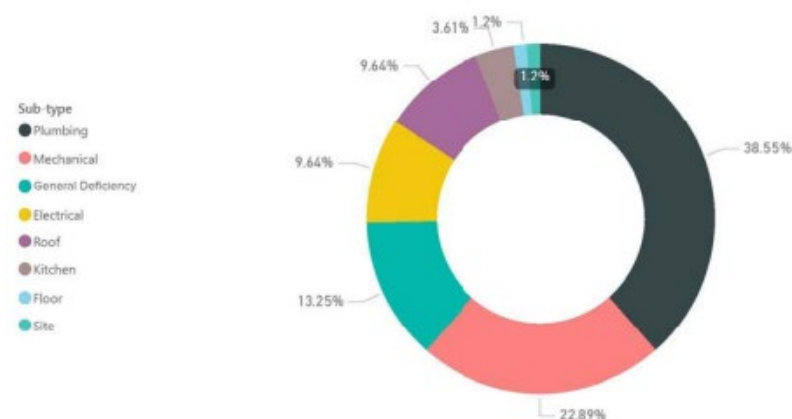


872K
Campus Total

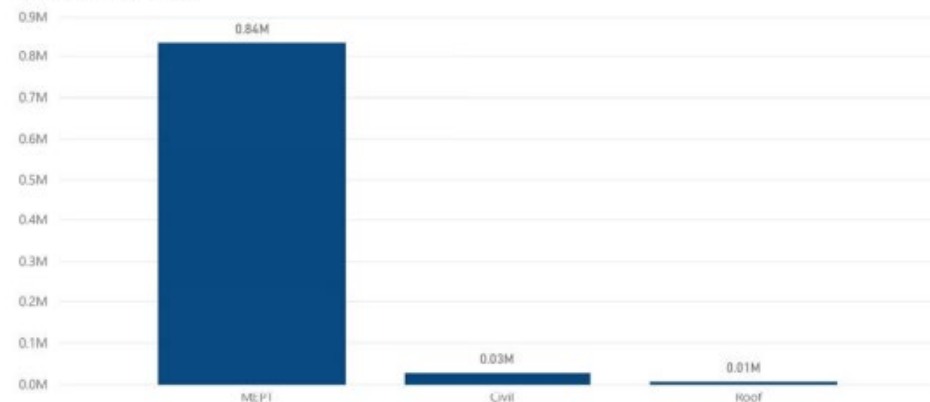
\$2.45
\$/SF

355,247
Facility Square Footage

Number Of Deficiencies



Cost by Deficiency Type



A group of people, including children and adults, are shown in profile, playing drums. They are wearing winter clothing like jackets and hoodies. The image is overlaid with a dark blue filter. The text "Community Bond Task Force" is centered in white.

Community Bond Task Force

Community Bond Task Force

Nearly 60 citizens were invited to join a Community Bond Task Force to ensure the entire MISD community and varying perspectives were represented.

The Task Force was charged to:

- **Represent the entire community** in the facility planning process
- Assist the district in **assessing and prioritizing** the District's current and long-term facility needs
- Consider the **educational needs of all students**
- Develop a recommendation that is **fiscally sound**
- Report their **recommendations** to the Montgomery ISD Board of Trustees



A group of young people are captured in mid-air, jumping joyfully in a large, empty arena or stadium. The scene is bathed in a strong red light, creating a vibrant and energetic atmosphere. The background shows rows of empty seats and a high ceiling with some structural elements. The overall mood is one of celebration and excitement.

Bond Proposal

Bond Proposal

MISD is proposing a bond election for \$326 million to address:

- **Growth**
- **Facility Upgrades**
- **Career and Technical Education (CTE) Opportunities**

Growth Projects

Construct New Elementary #7

\$43,492,119

- Alleviate overcrowding of elementary schools
- Designed for 900 student capacity (similar to Keenan ES)

Construct Addition to Lake Creek High School

\$27,882,715

- Provides additional 900 student capacity
- Provides additional classrooms and science labs

Land Purchase

\$15,000,000

- Provides funding to purchase land for ES #7, JH #3, & Centralized CTE / Ag Science Center

Design & Pre-Construction Services for Junior High #3

\$6,000,000

- Provides for design and other related services for future JH #3

Growth Projects

New Buses

\$6,325,000

- Provides additional buses to accommodate growth
- Replaces buses that have exceeded useful life

Technology Devices

\$5,400,000

- Provides class set of devices for grades PK - 5
- Provides individual technology for grades 6-12

Facility Upgrade Projects

District-wide Facility Upgrades

\$75,000,000

- Upgrades to all MISD campuses / departments
- HVAC, Roofing, ADA, Lighting, Plumbing

Technology Infrastructure Upgrades

\$21,008,364

- Classroom technology improvements to every classroom in MISD
- Network cabling, wifi, etc.

Safety & Security

\$5,059,754

- Upgrades to security cameras, intrusion alarms, fencing
- Additional security equipment

Transportation Facility Renovations

\$8,622,248

- Replaces fueling station at Liberty Center

Facility Upgrade Projects

Comparability Improvements **\$15,000,000**

- Makes MISD campuses / programs comparable
- Playground equipment & shade structures, furniture, fine arts improvements

Athletic Complex Renovations & Expansion **\$8,514,045**

- Renovates existing pressbox, elevator, artificial turf
- Additional seating capacity, restrooms/concession stands & locker rooms

MHS Athletic Renovations **\$1,284,436**

- Resurfacing of tennis courts & lighting upgrades at Auxiliary stadium

Cover Batting Cages at LCHS **\$743,759**

- Covers existing batting cages at LCHS

Install Artificial Turf for Baseball/Softball Fields **\$4,371,418**

- Provides artificial turf at MHS/LCHS baseball/softball competition fields

Career & Technical Education (CTE) Projects

Centralized CTE Center

\$61,611,905

- Provides centralized center for CTE
- Expands CTE offerings (automotive, cosmetology, and more)
- Appropriate lab / shop spaces

Centralized Ag-Science Center

\$21,314,167

- Animal pens, show arena
- Instructional spaces for Vet Tech classes

Bond Propositions

In compliance with state law, the bond package will be presented to voters in three separate propositions:

PROP A

**School
Facilities,
Land and
Buses**

\$312,986,000

PROP B

**Athletic
Complex**

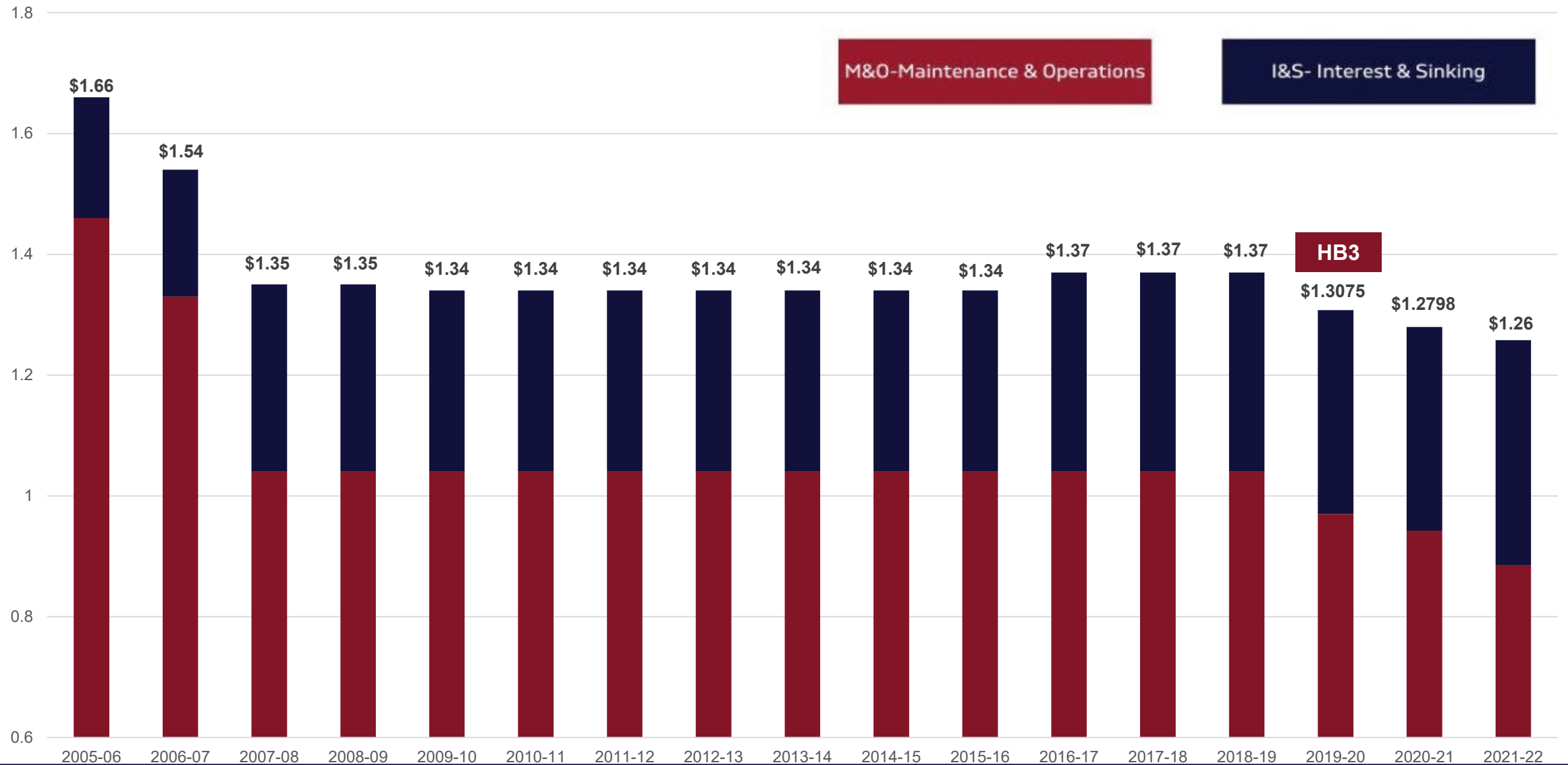
\$8,514,000

PROP C

**Technology
Devices**

\$5,400,000

Montgomery ISD Tax Rate History



Estimated Tax Impact

It's estimated that the district's tax rate would increase less than a penny from \$1.26 to \$1.267 after all bonds are sold by MISD. That's less than a penny per \$100 of property value.

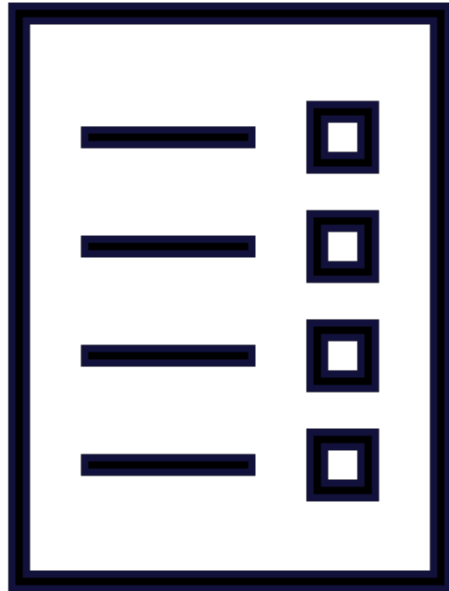


**That equates to an
increase of \$22.75 per
year on a \$350,000 home.**

Homeowners over the age of 65 who have filed their Homestead Exemption will not see an increase in property taxes associated with this bond.

Also on the ballot...

On the same May 7 ballot, voters will have the opportunity to increase the homestead exemption from \$25,000 to \$40,000.



If approved, MISD taxpayers will see a decrease in their school property taxes even if this bond referendum is approved.

Estimated Tax Impact

With an increase to homestead exemption from \$25,000 to \$40,000...



**A home valued at \$350,000
would see a decrease of
\$167.30 per year.**

Most homeowners in Montgomery ISD would still see a decrease in their school district property taxes if the bond and increase to the homestead exemption are both approved by voters

A blue-tinted photograph of a marching band. In the foreground, a person with long curly hair is seen from the side, wearing a light-colored jacket and playing a snare drum. Behind them, other band members are visible, some wearing masks and hooded jackets, also playing drums. The drums have 'YAMAHA' and 'MARCHING' visible on them. The background is dark and out of focus.

Next Steps

Key Election Dates

- Deadline to Register to Vote: Thursday, April 7, 2022
- Early Voting: April 25 – May 3, 2022
- Election Day: Saturday, May 7, 2022

Visit MISD's Facebook page or
www.misd.org/bond for more information.

BOND 2022

Paving Our Path



Early Voting April 25-May 3
Election Day Saturday, May 7

Montgomery ISD Board of Trustees have unanimously made the call for a \$326.9M bond referendum to address enrollment growth and facility improvements throughout the district.

WHAT'S INCLUDED

- Elementary School 7**
To accommodate enrollment growth in Keenan ES and Stewart Creek ES feeder patterns **\$43,492,119**
- Phase 2 of Lake Creek HS**
Completion of LCHS building with labs and classrooms to increase capacity by 900 students. **\$27,882,715**
- Career & Technical Education Facility**
Centralized facility for use by both MISD High Schools Expansion of CTE Programming and Course Selection Lab and Shop Spaces for Specialized Skill Instruction **\$61,611,905**
- Centralized Ag Science Center**
Barn Space for Ag students at Both MISD High Schools Indoor Show Arena with Seating and Concession Stand Instructional Spaces for Vet Tech Courses **\$21,314,617**
- Planning and Design of Junior High 3**
In Preparation for Future Growth Impacting Capacity at Current Junior High Campuses. **\$6,000,000**
- Land Purchases**
To Be Used for Elementary School 7, CTE Center, Ag Science Center and Junior High 3 **\$15,000,000**
- Facility Upgrades at ALL Campuses**
Upgrades to All Campuses Addressing 2021 Facilities Assessment including HVAC, Roofing, ADA Compliance, Lighting, Plumbing and Aesthetics **\$75,000,000**
- Technology Infrastructure**
Infrastructure Needed to Enhance Technology in All MISD Classrooms **\$21,008,364**
- School Safety and Security Upgrades**
Upgrades to Security Cameras, Intrusion Alarms, Fencing and Security Equipment **\$5,336,464**
- Bus and Transportation Upgrades**
Purchase of New Buses to Replace Aging Fleet and Accommodate Growth Facility Improvements at Both Transportation Centers **\$14,947,248**
- Comparability Improvements**
Make MISD Campuses/Programs Comparable Playground Equipment, Shade Structures, Furniture and Fine Arts Programs **\$15,000,000**
- Athletic Comparability Upgrades**
MHS Athletic Renovations for Auxiliary Stadium and Tennis Courts Turf on All MISD Softball and Baseball Fields **\$6,399,613**
- MISD Athletic Complex**
Renovations to Existing Press Box, Elevator and Turf Expansion to Seating Capacity, Restrooms, Concession Stands and Locker Rooms **\$8,514,045**

THE three PROPOSITIONS

- Prop A** Growth, School and Facility Upgrades, Land and Buses **\$312,993,045**
- Prop B** MISD Athletic Complex Updates and Renovations **\$8,514,045**
- Prop C** Technology Devices **\$5,400,000**

WHAT ABOUT THE taxes ?

It is estimated that the district's tax rate would increase from \$1.26 to \$1.267 after all bonds are sold by MISD.

That's less than a penny per \$100 of property value- an increase of \$22/year on the average home in MISD

Homeowners over the age of 65 who have filed their exemption will not see an increase in property taxes associated with this bond.

Also...

Voters will also have the opportunity to increase the homestead exemption from \$25,000 to \$40,000.

If approved...

Taxpayers in MISD would see a DECREASE in their school property taxes, even if this bond referendum is approved.

More info at www.misd.org/bond

Get the Facts - Be Informed - Vote with Confidence

Get the Facts - Be Informed - Vote with Confidence

DISTRICT-WIDE PROJECTS

that will impact every student

- School Safety and Security Upgrades
- Infrastructure for Elementary Classroom Technology
- New Buses to Replace
- Facility Upgrades at



Learn more at www.misd.org

BOND 2022

Paving Our Path

FREQUENTLY ASKED QUESTIONS

Updated January 24, 2022

1. What is a bond?

You can think of a bond like a home mortgage. It is effectively an agreement to repay borrowed money with interest over time. Bonds are sold by a school district to competing lenders to raise funds to pay for the costs of construction, renovations and equipment. School districts in Texas use bonds to finance renovations and new facilities.

2. What is a bond election?

Under state law, school districts must ask voters for permission to sell bonds to investors to raise the dollars required for capital projects such as renovation to existing buildings or building a new school.

When a bond is approved in an election, voters are giving permission for the district to take out a loan and pay that loan back over an extended period, much like a family takes out a mortgage loan for their home.

A group of people, likely a marching band, are shown from the side, playing drums. They are wearing various jackets and hoodies. The image is overlaid with a dark blue semi-transparent filter. The text "Election Ethics" is centered in white.

Election Ethics

Topics to Review



- Texas Election Code
- DOs and DON'Ts during an Election
- Advocacy vs Informational
- Your Role as a District Employee vs Citizen

Texas Election Code

- Section 255.003 of the Texas Election Code prohibits an employee or officer of the district from using school resources, funds or time for **political advertising or advocacy**.
- Political advertising is a communication that pushes for a particular outcome (passage or defeat) in an election and includes statements made orally or in writing.

NOTE: Communication can turn into advocacy based on tone and emphasis of the statements made.

What does this mean?

Serving as an employee of the district, you CAN:

- Educate, not advocate
- Share facts, not opinions
- Encourage residents to register and to go vote

This applies to your time and resources while serving in your official capacity as a district staff member.

Examples of Facts to Share

- Distribute district-developed materials + share district website
 - Share proposed projects & estimated costs
 - Give tax rate and financial information
 - Provide student enrollment data, demographic projections + capacity info
 - Speak to the age or condition of facilities
- Share information about the purpose of a bond election, the Community Bond Task Force and planning process
- Provide voter information
 - Propositions + ballot language
 - Voter registration information
 - Election dates, times & polling locations

In your Role as a Staff Member

Serving as an employee of the district, you CANNOT:

- Use district-issued devices or resources to advocate for or against the bond (includes computer, phone, copier, email)
- Develop, make copies, send or post materials that advocate
- Use slogans or marketing taglines
- Link to websites or social media pages that advocate
- Tell voters *how* to vote

Examples of Advocacy

Slogans like Good Schools Build Good Communities, Building a Better Future for Our Kids, Put Children First, Vote YES for the Success of ABC ISD!

Words or phrases such as:

- Vote for / support
- Best solution / countless benefits
- Fantastic / critically important
- State-of-the-art
- Horrible condition
- Need / deserve

Potential Ethics Violations

Tone and emphasis:

- We *need* a new school for our students
- The tax rate **WILL NOT INCREASE!**

As a Citizen

As a citizen, You CAN...

- Participate in after-hours advocacy activities related to the bond if you are not serving in your official capacity or as a representative of the district.
- Express personal opinions about the bond election, as long as it occurs on your own time.
- Campaign for the bond proposition(s) on **your own time** and with **your own resources**.



Questions?